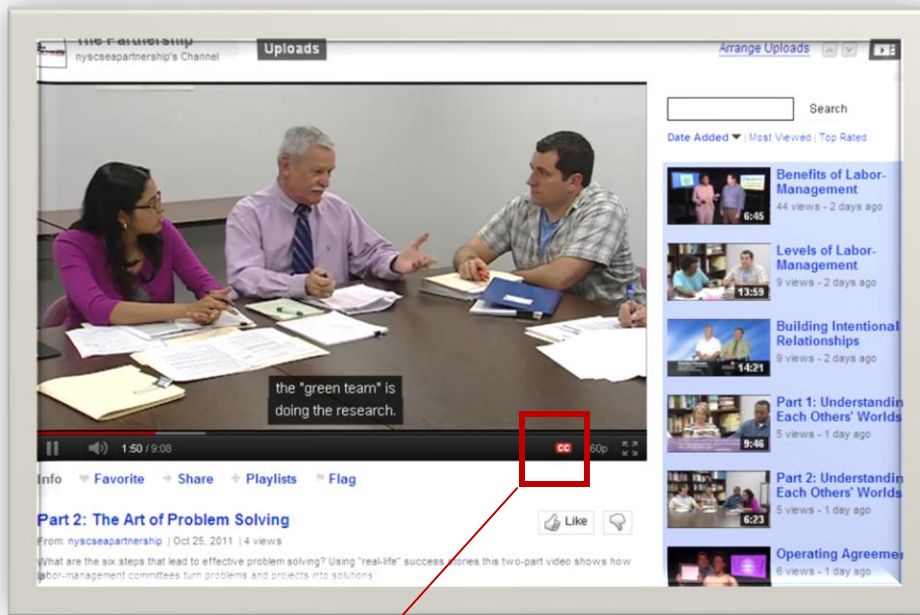


# How to Enable Closed Captioning

Captioning is available on all videos.

- A. If you are viewing the **YouTube** videos, click on the "**CC**" icon at the bottom of the player.

YouTube:



Click on the Closed Captioning icon

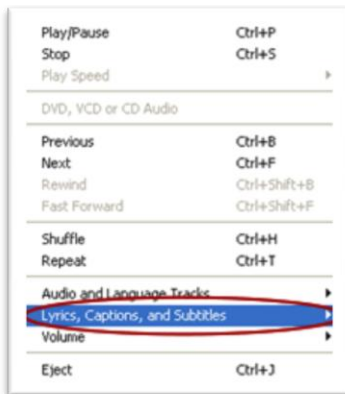
- B. Captions may be turned on in **Windows Media Player** by:

1. Pressing the **Alt** button on your keyboard. A menu will appear on your screen.

2. Click on the option for "**Play.**"



3. Click on the option for "**Lyrics, Captions and Subtitles.**"



4. Select "**On if available,**" or "English"